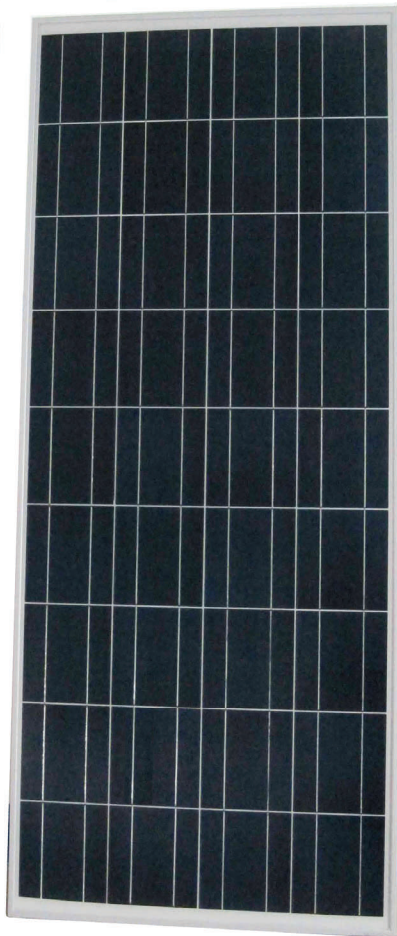


# ES4-100WP12V

EdgeTech  
**SOLAR**  
INTERNATIONAL Ltd.



## Features

High conversion efficiency of solar cell.

White tempered glass, EVA resin, weather proof film and anodized aluminum frame provide efficient protection from the severest environmental conditions.

Product guarantee 5 years.

12 Volt Nominal Module ideal for Off-Grid systems.

EdgeTech Solar photovoltaic modules are produced in a ISO9001 qualified factory using the highest quality materials and excellent quality control. Each module must undergo an extensive series of performance tests putting the module under extreme electrical and mechanical conditions to assure each module meets or exceeds specifications for many years of reliable performance even in the most challenging of environments.

## QUALITY COMPONENTS

## HIGH PERFORMANCE

## RELIABLE

## DURABLE

## 25 YEAR WARRANTY

On the Edge of Today's  
Energy Technology



# ES4-100WP12V

## ELECTRICAL CHARACTERISTICS

Type of Module	Poly crystalline
Maximum Power Rating (Pmax)	100 Watts
Maximum Power Tolerance ±	3 %
Open-Circuit Voltage (Voc)	21.00 Volts
Short-Circuit Current (Isc)	6.50 Amps
Maximum Power Voltage (Vmp)	17.00 Volts
Maximum Power Current (Imp)	5.88 Amps
Number of Cells	36 4x9
Temperature Range	-40 to 85 °C
Nominal Voltage	12 Volts

## MECHANICAL CHARACTERISTICS

Junction Box Type	CE Certified
Length of Cable	900 mm
Dimensions	1480x670x30 mm
Weight	9.96 kg
Packing	4 pcs/carton
Loading Capacity Container	1484 pcs/40ft

## WARRANTY

Workmanship & Product Warranty	5 years
Power Output Warranty 12 years	90% Power
Power Output Warranty 25 years	80% Power

## CERTIFICATIONS

ISO-9001 CE



Standard Test Conditions AM1.5, 1000W/m<sup>2</sup>, 25°C



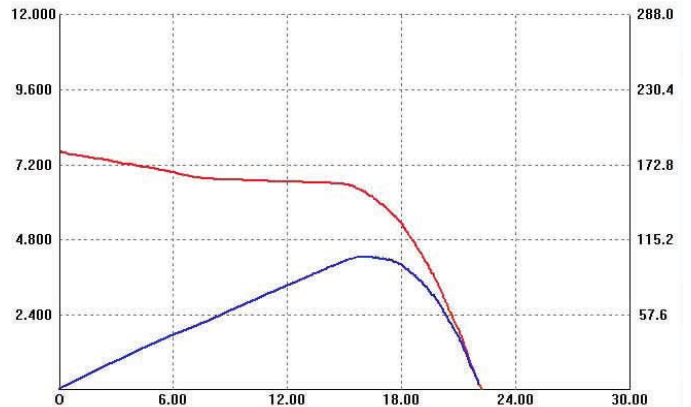
### EdgeTechSolar International Ltd.

32H Nam Shan Village  
New Territory, Hong Kong, China SAR

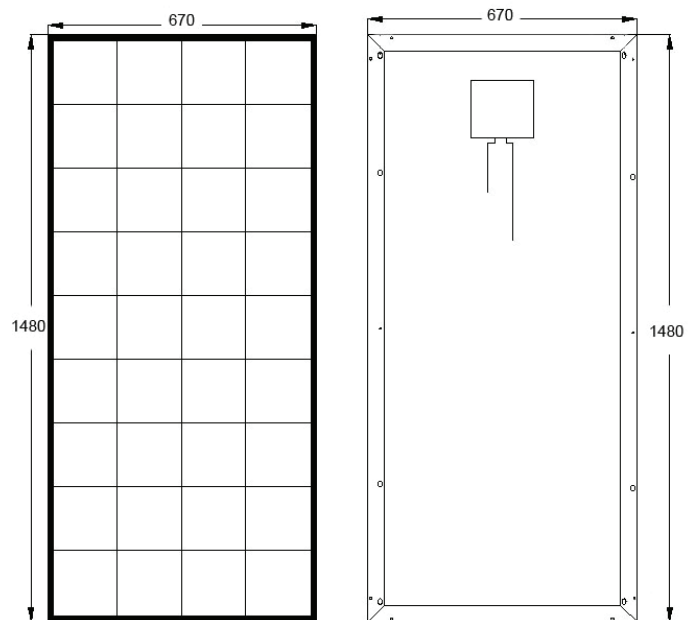
US Toll Free 1.800.209.0909  
US Tel 1.650.488.8300  
HK Tel 852.8120.7887

Sales@EdgetechSolar.com  
www.EdgetechSolar.com

## IV CURVES



## DIMENSIONS



## QUALITY ASSURANCE TESTS

- Electrical Insulation
- Outdoor Exposure
- Hot-Spot Endurance
- UV-Exposure
- Thermal Cycling
- Humidity Freeze
- Damp Heat
- Robustness of Terminations
- Wet Leakage Current
- Mechanical Load
- Hail Impact
- Bypass Diode Thermal